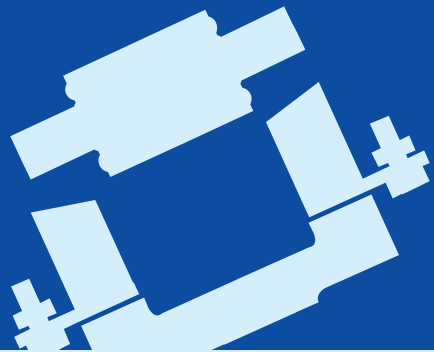


Low Voltage Fuse

Professional High Voltage And Low Voltage Fuse Manufacturer

Fuse Bases



Cylindrical Fuse Holders



Low-Voltage Fuses
Fuse Bases



► Applications

These fuse holders are supporters for fuses with size up to 22 × 58mm. They are capable of working under heat caused by rated current and expected short impacting current up to 100KA. It can also function as a fuse disconnecting switch by multi-phase combination. There are two in/out lines at the RT18N fuse base, providing a power cut function. The RT18L type has a safety lock to lock the fuse carrier when disconnected to avoid wrong operation; it can also be equipped with an indicator, which goes on when the fuse linke breaks.

Rated insulate voltage up to 690V; Working frequency 50Hz AC; Conventional free air thermal current up to 125A; Compliant with GB13539.1, GB13539.2, GB13539.6, GB14048.3 and IEC269-1, IEC269-2, IEC269-2-1, IEC947-3 .

► Basic Data

The models, rated insulate voltage, rated current, and dimensions are shown in Figures 9.1~9.14 and Table 9 (Width of N-phase combination is Bn-nB).

► Design Features

After the plastic-injected case is equipped with contacts and fuse links, the bases are formed by welding or riveting both capable of being multi-phase structured. FB15C, FB16-3J, FB19C-3J, RT19 are open-structure, and others are semi-concealed structure. There are five fuse sizes available to choose from for the same fuse base of RT18N, RT18B and RT18C. There are two sets of in-out lines for RT18N. One is installed with fuse links of the according size. The other is a permanent open contacts with double breaking points. The whole base unit can cut the power. RT18 bases are all DIN rail installed, among which the RT18L is equipped with safety lock against wrong operation in the breaking state.

Table 9

Cat. No.	Models	Fuse link models	Rated insulation voltage(V)	Conventional free air thermal current(A)	Dimensions (mm)		Weight (g)
					Fig.		
0901	RT14-20	10 × 38	500	20	Bolt installing hole $\phi 4.5$	See figure 9.1	38
0902	RT14G-20	10 × 38	500	20	G32-15 rail installation	See figure 9.1	44

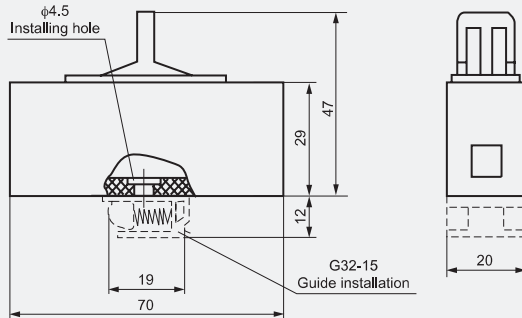


Figure 9.1



Table 9 (cont.)

Cat. No.	Models	Fuse link models	Rated insulation voltage(V)	Conventional free air thermal current(A)	Fig.	Dimensions (mm)					Weight (g)
						A1	B	H1	H2	ϕd	
0903	RT14-32	14 × 51	500	32	9.2	105	26.5	57	135	5.5	148
0904	RT14-63	22 × 58	500	63	9.2	125	35	66	158	5.5	241

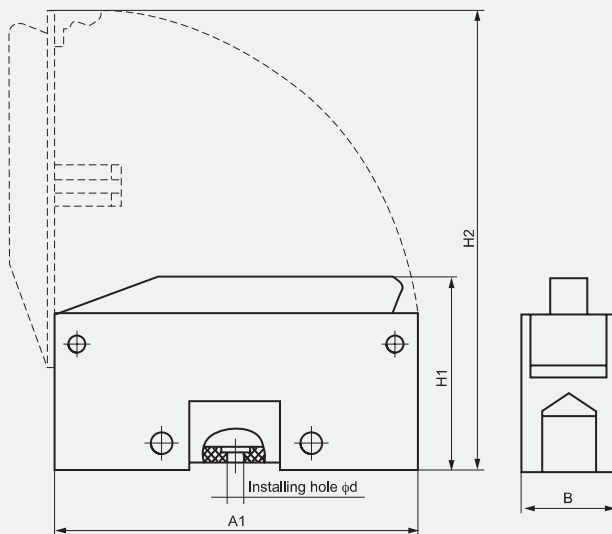


Figure 9.2

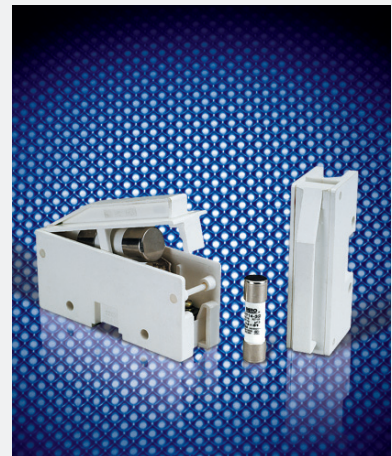


Table 9 (cont.)

Cat. No.	Models	Fuse link models	Rated insulation voltage(V)	Conventional free air thermal current(A)	Dimensions (mm)					Weight (g)	
					Fig.	A	B	H1	H2		ϕd
0905	RT19-16	8.5 × 31.5	500	16	9.3	69	18.5	28.5	41.5	5	34
0906	RT19-25	10 × 38	500	25	9.3	80	23	35	53	6.5	57

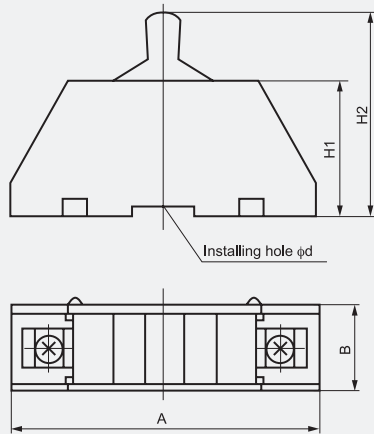
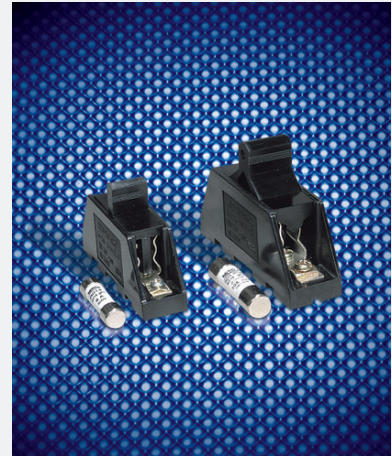


Figure 9.3



Low-Voltage Fuses
Fuse Bases



Table 9 (cont.)

Cat. No.	Models	Fuse link models	Rated insulation voltage(V)	Conventional free air thermal current(A)	Dimensions (mm)					Weight (g)
					Fig.	A	B	H1	ϕd	
0907	RT19-40	14 × 51	500	40	9.4	91	28.5	40	5.5	78
0908	RT19-100	22 × 58	500	100	9.4	108	36	50	6.5	157

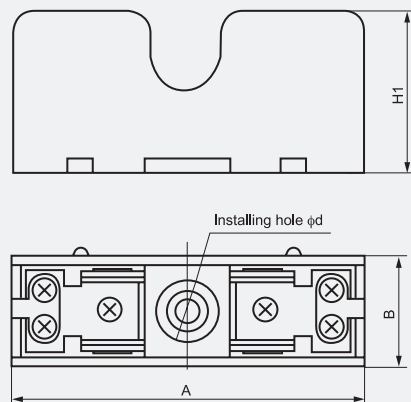


Figure 9.4

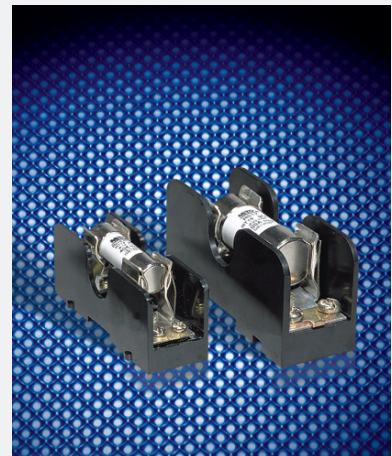


Table 9 (cont.)

Cat. No.	Models	Fuse link models	Rated insulation voltage(V)	Conventional free air thermal current(A)	Dimensions (mm)						Weight (g)
					Fig.	A1	A2	B	H1	H2	
0909	RT18-32(X)	10 × 38	500	32	9.5	79	81	18	61	80	59
0910	RT18B-10	8.5 × 23	500	10	9.5	80	82	18	60	78	59
0911	RT18B-16	10 × 25.8	500	16	9.5	80	82	18	60	78	59
0912	RT18B-20	8.5 × 31.5	500	20	9.5	80	82	18	60	78	59
0913	RT18B-25	10 × 31.5	500	25	9.5	80	82	18	60	78	59
0914	RT18B-32	10 × 38	500	32	9.5	80	82	18	60	78	59
0915	RT18C-10	8.5 × 23	500	10	9.5	77	78	18	62	81	56
0916	RT18C-16	10 × 25.8	500	16	9.5	77	78	18	62	81	56
0917	RT18C-20	8.5 × 31.5	500	20	9.5	77	78	18	62	81	56
0918	RT18C-25	10 × 31.5	500	25	9.5	77	78	18	62	81	56
0919	RT18C-32	10 × 38	500	32	9.5	77	78	18	62	81	56
0920	RT18M-32	10 × 38	500	32	9.5	78	78	18	60	80	56
0921	HG30-32	10 × 38	500	32	9.5	78	80	18	73	88	57
0922	RT18-63(X)	14 × 51	500	63	9.5	103	105	27	80	110	192

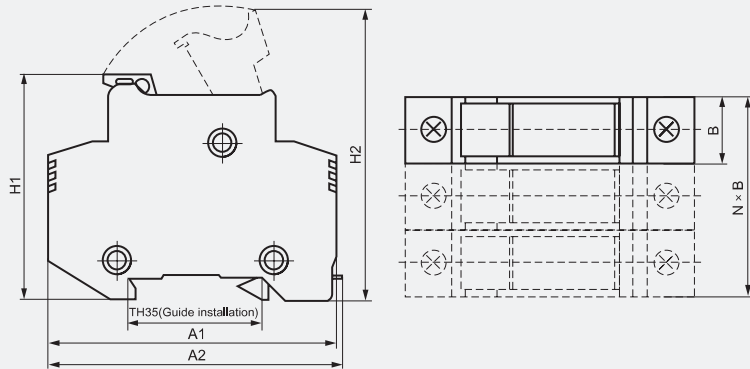


Figure 9.5

Table 9 (cont.)

Cat. No.	Models	Fuse link models	Rated insulation voltage(V)	Conventional free air thermal current(A)	Dimensions (mm)		Weight (g)
					Fig.		
0923	RT18N-10	8.5 × 23	500	10	See figure 9.6		70
0924	RT18N-16	10 × 25.8	500	16	See figure 9.6		62
0925	RT18N-20	8.5 × 31.5	500	20	See figure 9.6		63
0926	RT18N-25	10 × 31.5	500	25	See figure 9.6		62
0927	RT18N-32	10 × 38	500	32	See figure 9.6		62

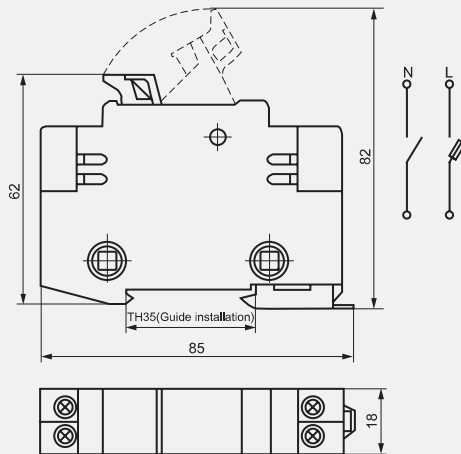


Figure 9.6



Table 9 (cont.)

Cat. No.	Models	Fuse link models	Rated insulation voltage(V)	Conventional free air thermal current(A)	Dimensions (mm)					Weight (g)	
					Fig.	A1	A2	B	H1		H2
0928	RT18L-63	14 × 51	690	63	9.7	108	115	27	78	100	114
0929	RT18L-125	22 × 58	690	125	9.7	126	134	36	78	104	182

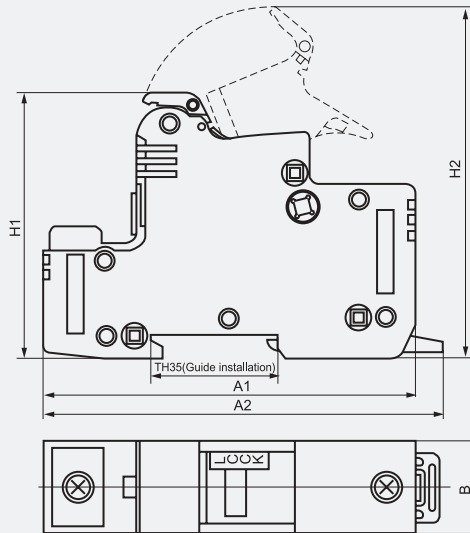


Figure 9.7



Low-Voltage Fuses
 Fuse Bases



Table 9 (cont.)

Cat. No.	Models	Fuse link models	Rated insulation voltage(V)	Conventional free air thermal current(A)	Dimensions (mm)						Weight (g)	
					Fig.	A1	A2	B	H1	H2		φd
0930	HG30-63	14 × 51	500	63	9.8	107	80	27	80	102	4.5	167
0931	HG30-125	22 × 58	500	125	9.8	140	110	36	90	109	4.5	185

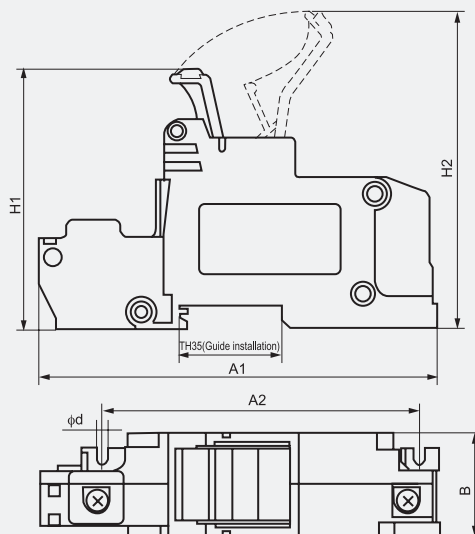


Figure 9.8



Table 9 (cont.)

Cat. No.	Models	Fuse link models	Rated insulation voltage(V)	Conventional free air thermal current(A)	Dimensions (mm) Fig.	Weight (g)
0932	FB14-16X	8.5 × 31.5	500	16	See figure 9.9	38

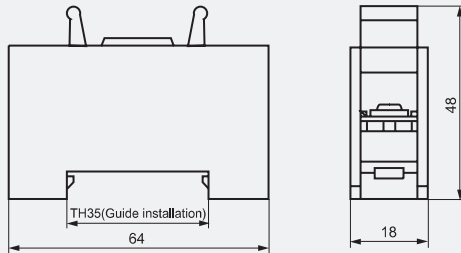


Figure 9.9



Table 9 (cont.)

Cat. No.	Models	Fuse link models	Rated insulation voltage(V)	Conventional free air thermal current(A)	Dimensions (mm) Fig.	Weight (g)
0933	FB15C	10 × 38	500	32	See figure 9.10	25

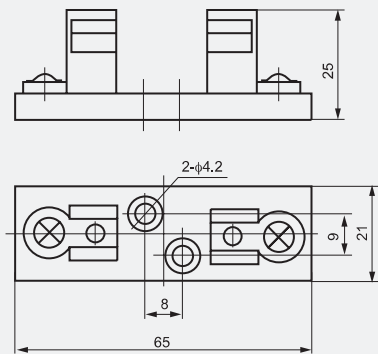


Figure 9.10



Table 9 (cont.)

Cat. No.	Models	Fuse link models	Rated insulation voltage(V)	Conventional free air thermal current(A)	Dimensions (mm) Fig.	Weight (g)
0934	FB16-3J	14 × 51	500	50	See figure 9.11	140

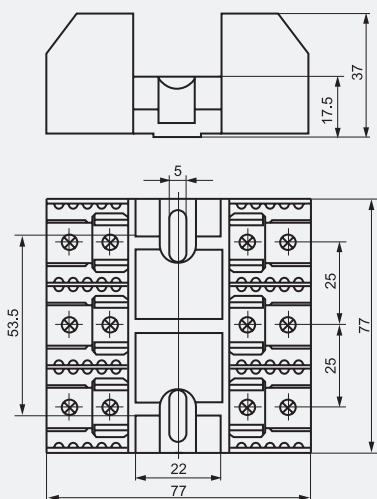


Figure 9.11



Low-Voltage Fuses Fuse Bases



Table 9 (cont.)

Cat. No.	Models	Fuse link models	Rated insulation voltage(V)	Conventional free air thermal current(A)	Dimensions (mm) Fig.	Weight (g)
0935	FB19C-3J	27 × 139	600	63	See figure 9.12	365

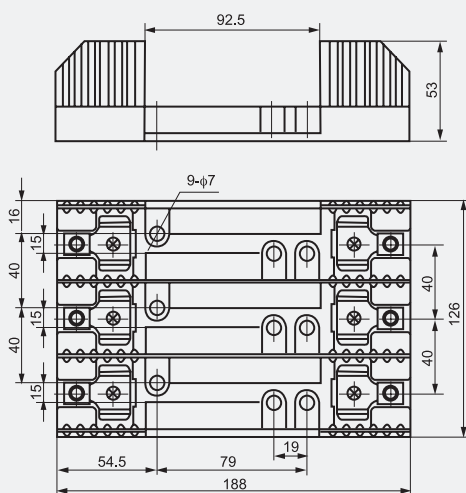


Figure 9.12



Table 9 (cont.)

Cat. No.	Models	Fuse link models	Rated insulation voltage(V)	Conventional free air thermal current(A)	Dimensions (mm)										Weight (g)
					Fig.	A1	A2	A3	B1	B2	H1	H2	ϕd		
0936	ZRB-50	14 × 51	500	50	9.13	98	95.5	42.5	12	30	45	123	5	104	
0937	ZRB-100	22 × 58	500	100	9.13	107.5	103.5	48.5	18	35	59	142	6	150	

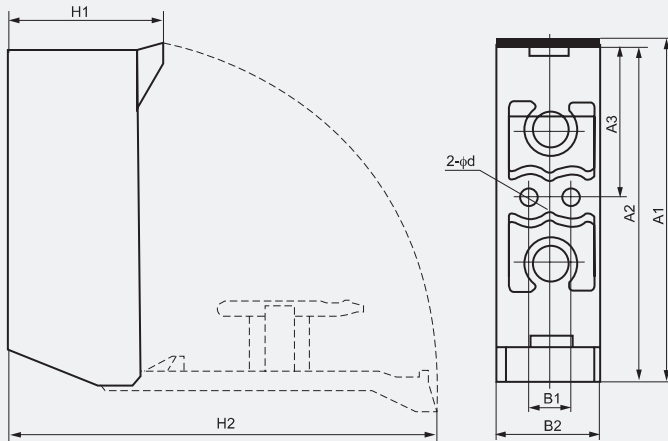


Figure 9.13

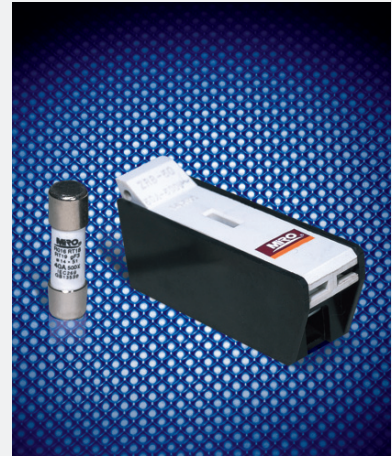


Table 9 (cont.)

Cat. No.	Models	Fuse link models	Rated insulation voltage(V)	Conventional free air thermal current(A)	Dimensions (mm)	Weight (g)
					Fig.	
0938	RT14E-100	22 × 58	500	100	See figure 9.14	146

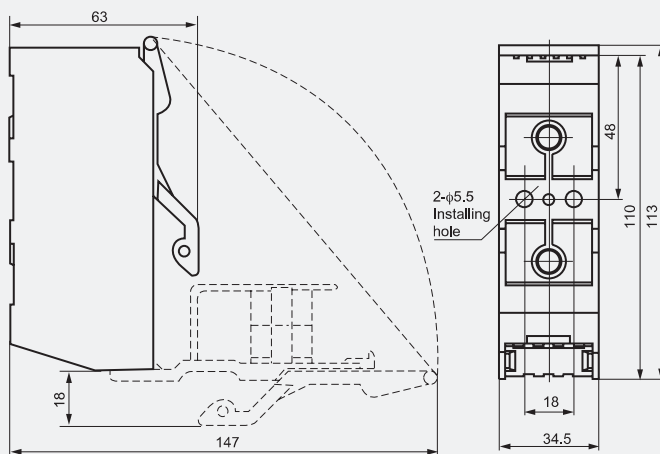


Figure 9.14

